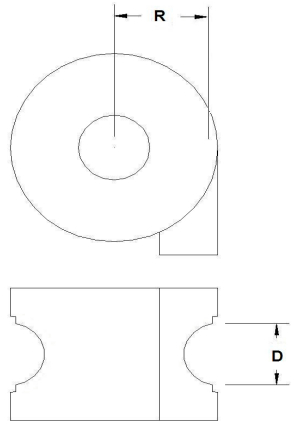


TYPICAL TUBE BENDING DIES FOR TUBE PROCESSING

Max. Thickness of Material For Bending:

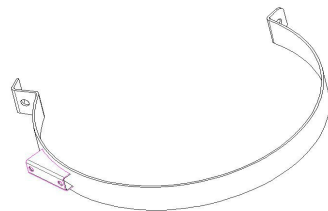
* Tube wall thickness ranged from 1/16" (or specified) to solid bar depending on outer diameter of the tube / bar



Tube OD (D)	Die Radius (R)						
	1/2"	0.875"	2.50"				
5/8"	1.00"	2.50"					
3/4"	1.50"	1.57"	1.875"	1.97"	2.00"	2.25"	2.38"
	2.50"	2.95"	3.00"	4.00"	4.156"	7.00"	
1"	1.20"	1.50"	1.57"	1.97"	2.00"	2.36"	2.75"
	3.00"	3.54"	3.82"	4.75"	6.10"	7.125"	9.00"
1-1/8"	3.00"	5.43"	5.00"				
1-1/4"	2.97"	3.00"					
2-3/8" (2" Sch 80 Pipe)	6.00"						

BAND / STRAP ROLLING DIES

AIR-CLEANER BANDS	Die Radius
	1.25"
	1.75"
	2.25"
	2.50"
	2.75"
	4.00"
	4.25"
	4.50"
	5.00"
	5.50"
FUEL TANK STRAPS	7.50"
	8.50"



Note: Bending die not shown on the list can be specialty made to tailor specific manufacturing requirements.